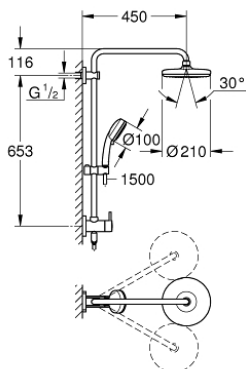


26 190 001 RETROFIT SYSTEM 210 SHOWER SYSTEM WITH DIVERTER FOR WALL MOUNTING

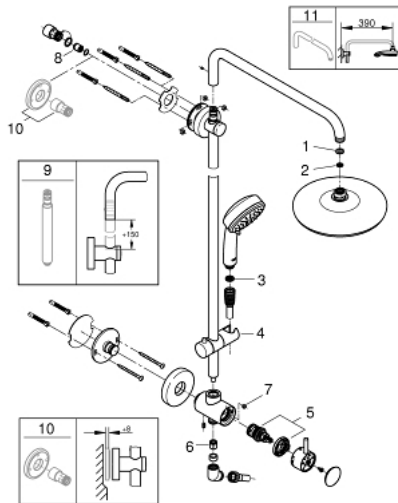


PRODUCT DESCRIPTION

- Consisting of:
- horizontal swivable 450 mm projection shower arm
- built-in diverter allows change between:
- head shower Tempesta 210 9.5 l/min (26 410)
- Rain spray pattern
- GROHE EcoJoy 9.5 l/min flow limiter
- with ball joint
- rotation angle $\pm 15^\circ$
- hand shower Tempesta Cosmopolitan 100 (27 571 001)
- 2 spray patterns:
- Rain, Jet
- GROHE EcoJoy 5.7 l/min. flow limiter
- adjustable height via gliding element
- Rotaflex shower hose 1500 mm 1/2" x 1/2" (28 409)
- angle adapter
- GROHE DreamSpray perfect spray pattern
- GROHE SprayDimmer (Stepless flow rate reduction)
- GROHE StarLight chrome finish
- SpeedClean anti-limescale system
- Inner WaterGuide for a longer life
- Twistfree preventing the hose from twisting
- suitable for instantaneous heaters from 18 kW/h
- min. recommended pressure 1.0 bar



26 190 001 RETROFIT SYSTEM 210 SHOWER SYSTEM WITH DIVERTER FOR WALL MOUNTING



SPARE PARTS, July 2016 – now

- 1: Fibre seal dia. \varnothing 18,5 x \varnothing 12 x 2 (Spare part-nr. 0138900M)
 - 2: Strainer (Spare part-nr. 48007000)
 - 3: Strainer (Spare part-nr. 0700200M)
 - 4: Sliding piece (Spare part-nr. 12140000)
 - 5: Diverter (Spare part-nr. 48058000)
 - 7: Flow limiter (Spare part-nr. 48160000)
 - 8: Non-return valve (Spare part-nr. 08565000)
 - 9: Retrofit 6" height extension (Spare part-nr. 26464000)*
 - 10: Spacer (Spare part-nr. 26191000)*
 - 11: Shower arm for shower systems (Spare part-nr. 14047000)*
- * Optional accessories